

For **WATERPROOFED ROOFS OR EXISTING UPSTANDS**

# SKYDÔME® ROND

CE  
EN 1873 + A1: 2016

 **ORIGIN' VERSION**



## Filling

### ORIGIN' RANGE:

- PMMA or PCA dropped-edge double dome



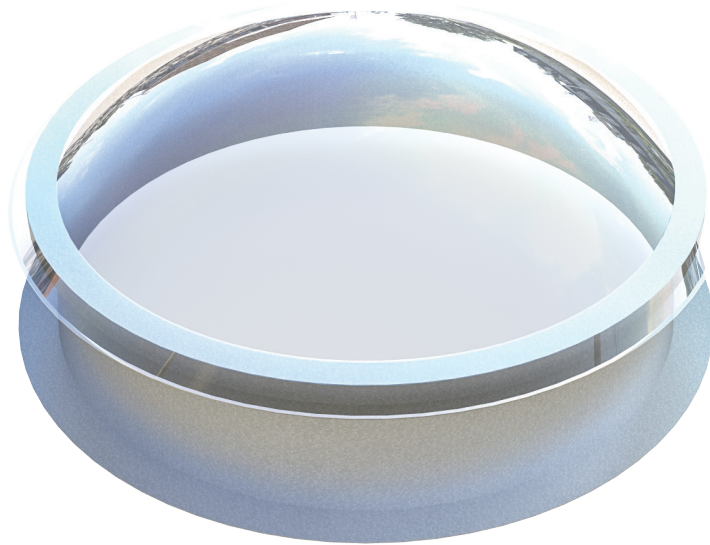
## Upstand

- Insulated upstand
- 1.2 mm galvanised steel upstand

### ORIGIN' RANGE:

- Height 300 mm with 15 mm bituminous insulating coating

The SKYDÔME® ROND is a skylight intended for waterproofed flat roofs on all types of buildings (including public facilities, work premises and industrial buildings). It consists of a steel skewed upstand.



## OPTIONS



### Types of filling

- Dropped-edge double dome
- Solid PC double dome, depending on dimensions
- PCA 16
- Transparent dome on request, depending on dimensions



### Upstand

- Lacquered interior (standard RAL colours)
- Steel upstand with heel height and width on request



### Other information

- Fall protection security bars

## Dimensions

Opening dimensions Interior Ø (cm)	Height H* (cm)		Light surface (m <sup>2</sup> )	Possible	
	PCA	DD		PCA	DD
Ø 40	36	45	0.13	No	Yes
Ø 50	36	47	0.19	No	Yes
Ø 60	36	50	0.30	No	Yes
Ø 70	37	52	0.41	Yes	Yes
Ø 80	37	54	0.56	Yes	Yes
Ø 90	37	54	0.67	Yes	Yes
Ø 100	37	55	0.78	Yes	Yes
Ø 110	37	57	1.00	Yes	Yes
Ø 120	37	58	1.13	Yes	Yes
Ø 130	37	60	1.36	Yes	Yes
Ø 140	37	61	1.54	Yes	Yes
Ø 150	37	63	1.76	Yes	Yes
Ø 160	37	64	2.01	Yes	Yes
Ø 180	39	67	2.54	Yes	Yes
Ø 200	39	72	3.14	Yes	Yes

Contact us for other dimensions. \* For an upstand height of 360 mm

## Filling performance

Other filling and filling options: see "Filling" data sheet.

Type of filling	Thermal transmittance factor Ug (W/ m <sup>2</sup> .K)	LT D65 <sup>(2)</sup>	SF or g <sup>(2)</sup>	Reaction to fire	R <sub>w</sub> (dB) <sup>(3)</sup>	
	U <sub>hor</sub> <sup>(1)</sup>					
Domes	Transparent PMMA single dome	6.38	91%	92%	ND	ND
	Opal PMMA single dome	6.38	91%	92%	ND	ND
	Transparent solid PC single dome	6.38	91%	92%	ND	ND
	Opal solid PC single dome	6.38	91%	92%	ND	ND
	Transparent PMMA double dome Transparent upper dome + transparent lower dome	2.89	84%	ND	ND	ND
	Opal PMMA double dome Opal upper dome + transparent lower dome	2.89	ND	ND	ND	ND
PCA	Opal 4-wall PCA 10	2.9	61%	61%	B-s1-d0	R <sub>w</sub> =19 dB

For information: PC = Polycarbonate, PMMA = Poly methyl methacrylate

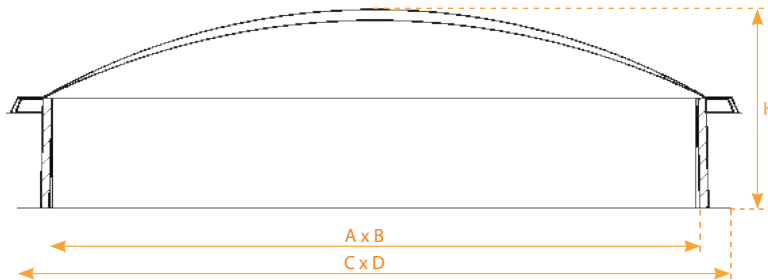
<sup>(1)</sup>Relative to the horizontal, as per §2.31 of the Th-Baf regulations.

<sup>(2)</sup>Light transmittance LT D65 and solar transmittance SF (TST or g) as per EN 410.

<sup>(3)</sup>Filling insulated against airborne noise R<sub>w</sub>, pink noise R<sub>k</sub> (environment, airport and industrial activities) and road noise R<sub>av</sub>, laboratory-measured according to NF EN ISO 140.

## Technical diagrams

### ORIGIN' range SKYDÔME



### COMPLIANCE & INSTALLATION

Compliant with EU standard **NF EN 1873**.

The product must be fastened and sealed in accordance with the requirements defined in the applicable DTU specifications (series 40 and 43).

Maximum insulation height: as per the DTUs, the sealing flashing must extend to a height of at least 150 mm.

The waterproofing complex (substrate, vapour barrier, insulation and two-layer sealant) must be no thicker than 140 mm for an interior upstand height of 310 mm, or 240 mm for an interior upstand height of 410 mm.

Maximum permissible slope: 25° or 46% (see installation instructions).

The security bar or protection grid option is recommended for products with PMMA filling.

**DoP available at [www.skydome.eu](http://www.skydome.eu)**

---

**SKYDÔME**

Entre Deux Villes  
02270 Sons-Et-Ronchères, France  
Tel: +33 (0)3 23 21 79 90  
Email: [info@skydome.eu](mailto:info@skydome.eu)  
[www.skydome.eu](http://www.skydome.eu)

For the product range in other countries, please contact  
your local representative or visit  
[www.skydome.eu](http://www.skydome.eu)

SKYDÔME reserves the right to modify product specifications without  
notice. The information and technical details contained in this  
documentation are provided in good faith and apply to the uses described.  
The recommendations for use must be checked to ensure they are  
appropriate and comply with the actual requirements, the specifications  
and all applicable legislation and regulations.

For other applications and conditions of use, please contact our technical  
team. Their advice must be sought concerning uses of our products that are  
not described specifically herein.

Click this link to check that you are seeing the most up-to-date and  
accurate information about our products:  
[https://www.skydome.eu/fr/produit/7\\_skydome-rond.html](https://www.skydome.eu/fr/produit/7_skydome-rond.html)