

For **WATERPROOFED ROOFS OR EXISTING UPSTANDS**

EQUILUX WOOD®

CE
EN 1873 + A1: 2016

FIXE



VERSION



Filling

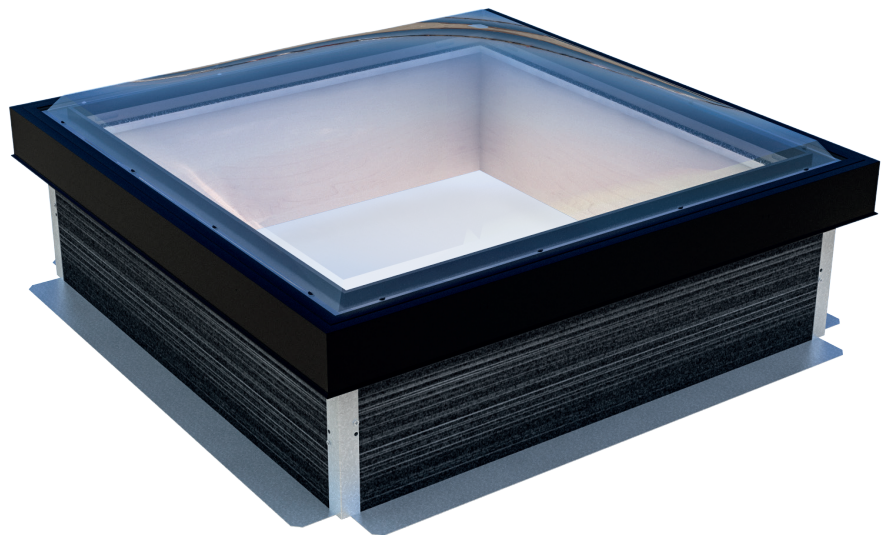
- Transparent PMMA upper dome + laminated glass safety double glazing



Upstand

- 290 mm or 460 mm high straight wooden upstand with a 30 mm bituminous insulating coating
- Natural white wood finish
- Treated with insecticide, fungicide and water repellent for enhanced stability and durability

The EQUILUX WOOD®, consisting of a wooden upstand and opening frame fitted with double filling, is SKYDÔME's latest innovation in natural daylight solutions.



OPTIONS



Types of filling

- Pyramid dome
- Solid PC dome



Upstand

- Fireproofed (M1) upstand on request



Other information

- Lacquered black exterior frame for even greater aesthetic appeal
- Two ranges of blinds: honeycomb blackout blinds and heat-abating pleated blinds
- Blind control system: manual or 24V electric including motor controller (220V/24V transformer), mounting brackets and load bar finished in RAL9016 as standard

Dimensions

| Roof opening dimensions A x B (cm) | Overall dimensions C x D (cm) | Height H* (cm) | Product weight** (kg) |
|---------------------------------------|----------------------------------|----------------|-----------------------|
| 60 x 60 | 82 x 82 | 53 | 34 |
| 80 x 80 | 102 x 102 | 55 | 46 |
| 90 x 90 | 112 x 112 | 58 | 58 |
| 100 x 100 | 122 x 122 | 58 | 72 |
| 120 x 120 | 142 x 142 | 62 | 99 |
| 140 x 140 | 162 x 162 | 65 | 155 |
| 150 x 150 | 172 x 172 | 67 | 168 |
| 60 x 90 | 82 x 112 | 53 | 39 |
| 80 x 120 | 102 x 142 | 55 | 73 |
| 100 x 200 | 122 x 222 | 58 | 138 |

Contact us for other dimensions. *For an upstand height of 290 mm. **Product delivered in 3 parts to facilitate onsite handling.

Acoustic performance

| | |
|---|-------------------|
| Acoustic attenuation R_w ($C; C_{TR}$) (dB) | ≥ 35 (-2;-5) |
| Rain-generated sound intensity L_{ia} (dB) | ≤ 46 |

R_w = sound attenuation index laboratory-measured according to EN410 (airborne noise)
 $R_w = R_w + C$ = "pink noise" attenuation index
 $R_{A,TR} = R_w + C_{TR}$ = attenuation index

Packaging

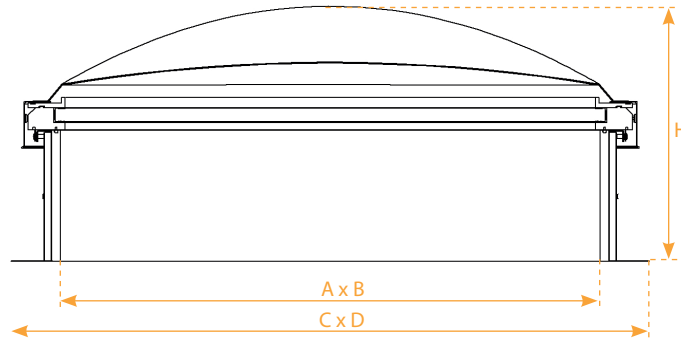
Delivered in three parts to facilitate rooftop handling (upstand + frame with laminated glass + dome).

Technical specifications and performance

| Roof opening (cm) | Light surface (m ²) | Filling | Light transmission | U_{RC} (W/m ² K) | A_{RC} (m ²) | AP Class | Equivalent AEV classification | Air flow (m ³ /h) | |
|----------------------|------------------------------------|------------------|-----------------------|----------------------------------|-------------------------------|----------|----------------------------------|---------------------------------|-----------------------|
| | | | | | | | | Less than 4 Pa | Less than 50 Pa |
| 60 x 60 | 0.36 | 4-16-44.2 | 80% | 1.20 | 1.50 | 0.02 | A4 | 0 | 0.12 |
| 80 x 80 | 0.64 | 4-16-44.2 | 80% | 1.10 | 2.10 | 0.03 | A4 | 0 | 0.16 |
| 90 x 90 | 0.81 | 4-16-44.2 | 80% | 1.10 | 2.40 | 0.04 | A4 | 0 | 0.18 |
| 100 x 100 | 1.00 | 4-16-44.2 | 80% | 1.10 | 2.80 | 0.04 | A4 | 0 | 0.20 |
| 120 x 120 | 1.4 | 4-16-44.2 | 80% | 1.10 | 3.60 | 0.05 | A4 | 0 | 0.24 |
| 140 x 140 | 1.96 | 4-16-55.2 | 80% | 1.00 | 4.50 | 0.06 | A4 | 0 | 0.28 |
| 150 x 150 | 2.25 | 44.2-16- 44.2 | 80% | 1.00 | 4.90 | 0.06 | A4 | 0 | 0.30 |
| 60 x 90 | 0.54 | 4-16-44.2 | 80% | 1.20 | 1.90 | 0.03 | A4 | 0 | 0.15 |
| 80 x 120 | 0.96 | 4-16-44.2 | 80% | 1.20 | 2.70 | 0.04 | A4 | 0 | 0.20 |
| 100 x 150 | 1.50 | 4-16-44.2 | 80% | 1.10 | 3.70 | 0.50 | A4 | 0 | 0.25 |
| 100 x 200 | 2.00 | 4-16-44.2 | 80% | 1.10 | 3.20 | 0.04 | A4 | 0 | 0.22 |

Air permeability tests carried out at the CSTC test centre as per NF EN 1873 protocols (with reference to the standards NF EN 12152 and NF EN 12153).

Technical diagrams

THERMIK' range
EQUILUX WOOD FIXE

SKYDÔME

Entre Deux Villes
02270 Sons-Et-Ronchères, France
Tel: +33 (0)3 23 21 79 90
Email: info@skydome.eu
www.skydome.eu

For the product range in other countries, please contact your local representative or visit www.skydome.eu.

SKYDÔME reserves the right to modify product specifications without notice. The information and technical details contained in this documentation are provided in good faith and apply to the uses described. The recommendations for use must be checked to ensure they are appropriate and comply with the actual requirements, the specifications and all applicable legislation and regulations.

For other applications and conditions of use, please contact our technical team. Their advice must be sought concerning uses of our products that are not described specifically herein.

Click this link to check that you are seeing the most up-to-date and accurate information about our products:
https://www.skydome.eu/fr/produit/65_equilux-wood.html