

For **WATERPROOFED ROOFS OR EXISTING UPSTANDS**

# EQUILUX WOOD®

CE  
EN 1873 + A1: 2016

OUVRANT

**THERMIK' VERSION**



## Filling

### THERMIK' RANGE:

- Transparent PMMA upper dome + laminated glass safety double glazing



## Upstand

### THERMIK' RANGE:

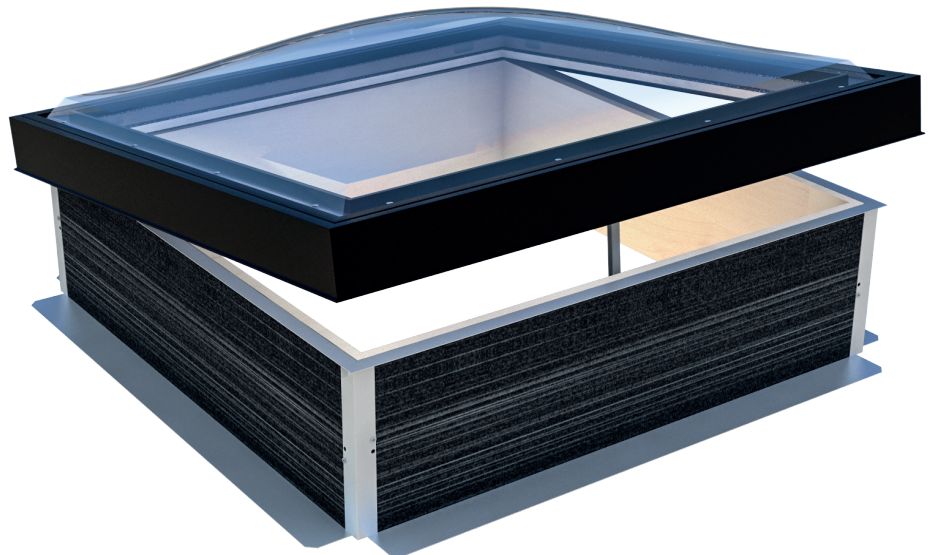
- 290 mm or 460 mm high straight wooden upstand with a 30 mm bituminous insulating coating
- Natural white wood finish
- Treated with insecticide, fungicide and water repellent for enhanced stability and durability



## Control

- 250 mm opening controlled by an electric jack

The EQUILUX WOOD OUVRANT® is the flat roof window you need to let in light, warmth and a touch of elegance. Designed specifically for flat roofs and blending effortlessly into any environment or architectural design, it combines traditional style and modern functionality for maximum comfort in an ecofriendly product.



## OPTIONS



### Types of filling

- Pyramid dome
- Solid PC dome



### Upstand

- Fireproofed (M1) upstand on request



### Other information

- Lacquered black exterior frame for even greater aesthetic appeal.
- Two ranges of blinds: honeycomb blackout blinds and heat-abating pleated blinds
- Blind control system: manual or 24V electric including motor controller (220V/24V transformer), mounting brackets and load bar finished in RAL9016 as standard

## Dimensions

Roof opening dimensions A x B (cm)	Overall dimensions C x D (cm)	Height H* (cm)	Product weight** (kg)
60 x 60	82 x 82	53	34
80 x 80	102 x 102	55	46
90 x 90	112 x 112	58	58
100 x 100	122 x 122	58	72
120 x 120	142 x 142	62	99
140 x 140	162 x 162	65	155
60 x 90	82 x 112	53	39
80 x 120	102 x 142	55	73
100 x 200	122 x 222	58	138

Contact us for other dimensions.

\* For an upstand height of 290 mm.

\*\*Product delivered in 3 parts to facilitate onsite handling.

## Technical specifications and performance

Roof opening (cm)	Light surface (m <sup>2</sup> )	Types of filling	Number of photovoltaic motors	Light transmission	Urc (W/m <sup>2</sup> K)	Arch (m <sup>2</sup> )	AP Class	Equivalent AEV classification	Air flow (m <sup>3</sup> /h)	
									Less than 4 Pa	Less than 50 Pa
60 x 60	0.36	4-16-44.2	1	80%	1.20	1.50	0.02	A4	0	0.12
80 x 80	0.64	4-16-44.2	1	80%	1.10	2.10	0.03	A4	0	0.16
90 x 90	0.81	4-16-44.2	1	80%	1.10	2.40	0.04	A4	0	0.18
100 x 100	1.00	4-16-44.2	1	80%	1.10	2.80	0.04	A4	0	0.20
120 x 120	1.44	4-16-44.2	1	80%	1.10	3.60	0.05	A4	0	0.24
140 x 140	1.96	4-16-55.2	1	80%	1.00	4.50	0.06	A4	0	0.28
60 x 90	0.54	4-16-44.2	1	80%	1.20	1.90	0.03	A4	0	0.15
80 x 120	0.96	4-16-44.2	1	80%	1.20	2.70	0.04	A4	0	0.20
100 x 150	1.50	4-16-44.2	1	80%	1.10	3.70	0.50	A4	0	0.25
100 x 200	2.00	4-16-44.2	1	80%	1.00	3.20	0.04	A4	0	0.22

Air permeability tests carried out at the CSTC test centre as per NF EN 1873 protocols (with reference to the standard NF EN 12153).

## Acoustic performance

Acoustic attenuation $R_w (C;C_{tr})$ (dB)	$\geq 35(-2;-5)$
Rain-generated sound intensity $L_{ia}$ (dB)	$\leq 46$

$R_w$  = acoustic attenuation index laboratory-measured according to EN410 (airborne noise)

$R_p$  =  $R_w + C$  = "pink noise" attenuation index

$R_{r,n}$  =  $R_w + C_n$  = "road noise" attenuation index

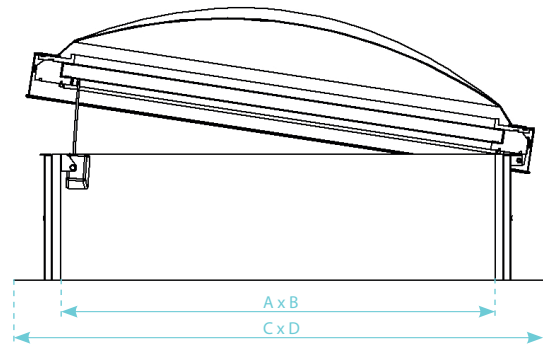
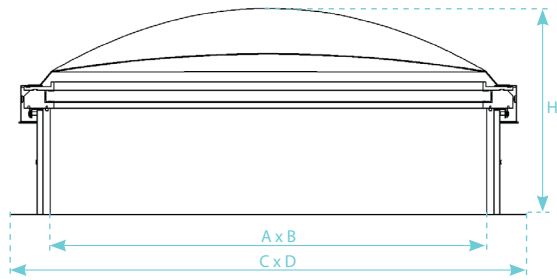
## Packaging

Delivered in three parts to facilitate rooftop handling (upstand + frame with laminated glass + dome).

## Technical diagrams

### THERMIK' range

#### EQUILUX WOOD OUVRANT



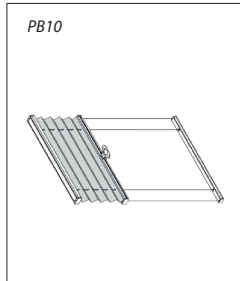
## COMPLIANCE & INSTALLATION

- The product must be fastened and sealed in accordance with the requirements defined in the applicable DTU specifications (series 40 and 43).
- The waterproofing complex (substrate, vapour barrier, insulation and two-layer sealant) must be no thicker than 120 mm for an interior upstand height of 290 mm, or 290 mm for an interior upstand height of 460 mm.
- Maximum permissible slope: 15° or 26% (see installation instructions).

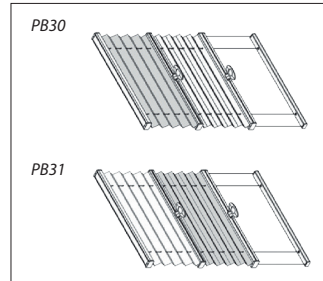
DoP available at [www.skydome.eu](http://www.skydome.eu)

## DECORATIVE BLACKOUT BLIND

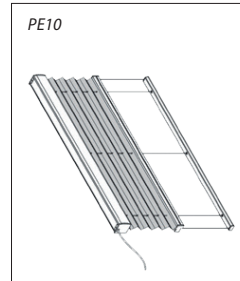
### 3 MODELS AVAILABLE



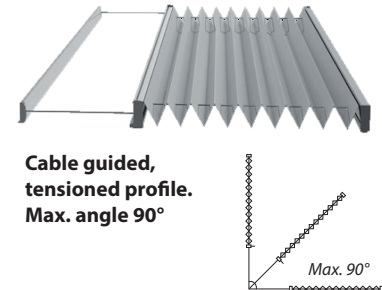
▶ **PB model** with tab



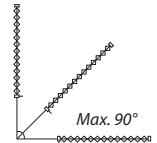
▶ **PB Day&Night model** with tab



▶ **PE model** with electric motor drive



**Cable guided, tensioned profile. Max. angle 90°**



### Fabrics: 2 styles

- **Pleated fabric**, available in a wide variety of colours, textures and transparencies.
- We also supply the **Cell model**, with honeycomb pleated fabric for **total blackout performance**.



▶ **Heat-abating range**  
Pleated fabric



▶ **Blackout range**  
Honeycomb cell fabric



▶ **Day&Night range**  
Combines two fabrics,  
one decorative, the other blackout

#### FOUR FABRICS

<b>F1</b> Pleated fabric <b>Lumière Nacaré</b>	<b>F3</b> Pleated fabric <b>Solar Nacaré Ignis</b>	<b>F4</b> Cell fabric <b>Opac Cell</b>	<b>F5</b> Cell fabric <b>Opac Cell Ignis</b>
--	--	--	--

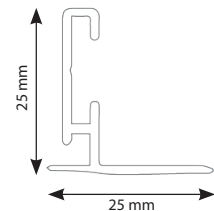
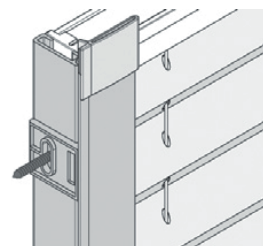
#### TWO TYPES OF MECHANISM

- **Manual operation** by a tab or telescopic rod assembly
- **Motorised operation:** SOMFY® LV 25 0.6/35 side-mounted 24 V hard-wired motor

### Technical specifications

		PB model with tab	PB Day&Night with tab	PE with electric motor
Retracted side		Top	Top	Top
Blind width	Minimum	150 mm	150 mm	260 mm
	Maximum 20 mm fabric	1500 mm	1500 mm	2300 mm
	Maximum 25 mm fabric	1500 mm	1500 mm	2300 mm
Blind height	Minimum	100 mm	100 mm	100 mm
	Maximum 20 mm fabric	4500 mm	4500 mm	4500 mm
	Maximum 25 mm fabric	3500 mm	3500 mm	3500 mm
Max. area	Fabrics T1/T3	6 m <sup>2</sup>	5 m <sup>2</sup>	6 m <sup>2</sup>
	Fabric F4	5 m <sup>2</sup>	4 m <sup>2</sup>	5 m <sup>2</sup>
	Fabric F5	4 m <sup>2</sup>	3.5 m <sup>2</sup>	4 m <sup>2</sup>

### Options



#### 90° and 96° L-shaped side slide

⚠ Components are colour-matched to the chosen fabric. Unless otherwise instructed on the purchase order, frames will be supplied in white.

○ White RAL 9016

● Cream RAL 9001

● White Aluminium RAL 9006

● Grey Brown RAL 8019

● Metallic Grey DB 703

#### Profile section colours



---

## **SKYDÔME**

Entre Deux Villes  
02270 Sons-Et-Ronchères, France  
Tel: +33 (0)3 23 21 79 90  
Email: [info@skydome.eu](mailto:info@skydome.eu)  
[www.skydome.eu](http://www.skydome.eu)

For the product range in other countries, please contact your local representative or visit [www.skydome.eu](http://www.skydome.eu).

SKYDÔME reserves the right to modify product specifications without notice. The information and technical details contained in this documentation are provided in good faith and apply to the uses described. The recommendations for use must be checked to ensure they are appropriate and comply with the actual requirements, the specifications and all applicable legislation and regulations.

For other applications and conditions of use, please contact our technical team. Their advice must be sought concerning uses of our products that are not described specifically herein.

Click this link to check that you are seeing the most up-to-date and accurate information about our products:  
[https://www.skydome.eu/fr/produit/89\\_equilux-wood-ouvrant.html](https://www.skydome.eu/fr/produit/89_equilux-wood-ouvrant.html)