

For **WATERPROOFED ROOFS OR EXISTING UPSTANDS**

SKYCLAIR® MULTIFACES

CE
EN 1873 + A1: 2016



VERSION



Filling

THERMIK' RANGE:

- PCA 16
- PCA 32
- Acoustik' Light



Upstand

- Insulated upstand
- 1.2 mm galvanised steel upstand

THERMIK' RANGE:

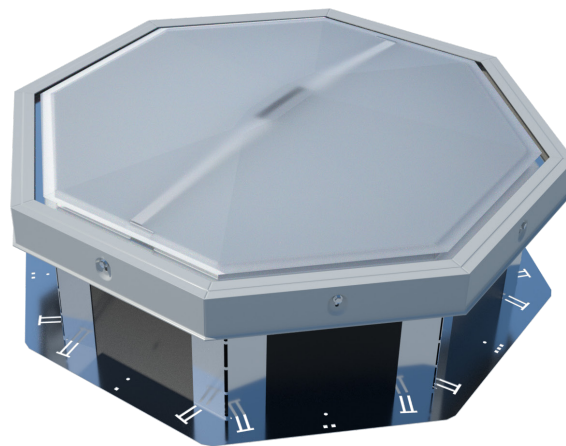
- Height 360 mm with 30 mm bituminous insulating coating



Side

- 8 or 12 sides depending on product size

The SKYCLAIR® MULTIFACES is a skylight intended for waterproofed flat roofs on all types of buildings (including public facilities, work premises and industrial buildings).



Also available:



OPTIONS



Types of filling

- Opal PCA 16 IR
- Grey PCA 16
- Transparent PCA 16



Upstand

- Upstand height: 410 mm or up to 590 mm
- Colaminated or galvanised sheet steel top for PVC waterproofing
- Bare insulation for PVC waterproofing



Other information

- 16 x 16 mm non-1200 joule square tube grid
- Upstand lacquered in RAL colour

Available versions



Dimensions

SKYDÔME® MULTIFACES			
Opening dimensions Interior Ø A (mm)	Opening dimensions Exterior Ø B (cm)	Number of sides	Light surface (m ²)
850	1030	8	0.60
900	1080	8	0.67
1000	1180	8	0.83
1100	1280	8	1.00
1200	1380	8	1.19
1300	1480	8	1.40
1400	1580	12	1.58
1500	1680	12	1.81
1600	1780	12	2.06
1700	1880	12	2.32
1800	1980	12	2.60

Filling performance

Other filling and filling options: see "Filling" data sheet.

Type of filling	Thermal transmittance factor Ug (W/ m ² .K)	LT D65 ⁽²⁾	SF or g ⁽²⁾	Reaction to fire	R _w (dB) ⁽³⁾	
	U _{hor} ⁽¹⁾					
PCA	Opal multi-wall PCA 16	1.9	45%	46%	B-s1-d0	R _w =21 dB
	Opal multi-wall PCA 20	1.6	54%	47%	B-s2-d0	R _w =21 dB
	Transparent multi-wall PCA 32	1.3	33%	49%	B-s2-d0	ND
Acoustik' Light	Acoustik' Light Transparent PCA 10 & transparent PCA 6	2.1	ND	ND	ND	ND

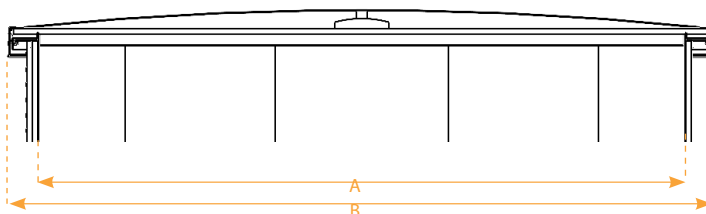
⁽¹⁾As per §2.31 of the Th-Bat regulations.

⁽²⁾ Light transmittance LT D65 and total solar transmittance SF (TST or g) as per EN 410.

⁽³⁾ Filling insulated against airborne noise R_w, pink noise R_k (environment, airport and industrial activities) and road noise R_{A1}, laboratory-measured according to NF EN ISO 140.

Technical diagrams

THERMIK' range SKYCLAIR MULTIFACES



Trade name

Trade name	Filling	Upstand insulation
SKYCLAIR MULTIFACES	THERMIK' 16	16 mm PCA (Opal PCA)
	THERMIK' 32	32 mm PCA (Transparent PCA)
	THERMIK' 20	20 mm PCA (Opal PCA)
	THERMIK' 20+	20+ mm PCA with LUMIRA (Transparent PCA)
	THERMIK' ACOUSTIK' LIGHT	10 mm PCA + 6 mm solid PC
		Upstand height: 360 mm Insulation: • on vertical part of upstand • on upstand lip

COMPLIANCE & INSTALLATION

Compliant with EU standard **NF EN 1873**.

The product must be fastened and sealed in accordance with the requirements defined in the applicable DTU specifications (series 40 and 43).

Maximum insulation height: as per the DTUs, the sealing flashing must extend to a height of at least 150 mm.

For the THERMIK' range, the waterproofing complex (substrate, vapour barrier, insulation and two-layer sealant) must be no thicker than 125 mm for an interior upstand height of 310 mm, 175 mm for an interior upstand height of 360 mm, or 225 mm for an interior upstand height of 410 mm.

Maximum permissible slope: 25° or 46% (see installation instructions).

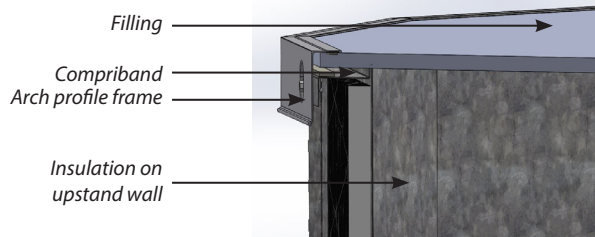
Only the security bar option provides guaranteed 1200 joule protection.

DoP available at www.skydome.eu

Product U_{RC} : 1.4 W/m².K*

ENHANCED THERMAL INSULATION

- ✓ **Range of filling options** with different thermal insulation, light transmittance and solar factor performance
- ✓ **$U_{RC} = 1.4$ W/m².K***
- ✓ **Compliant with applicable DTU specifications**
- ✓ **Superior watertightness**



Thermal performance: U_{RC} (W/m².K) and A_{RC} (m²)

SKYCLAIR® MULTIFACES								
Dimensions (mm)	Upstand height: 360 mm				Upstand height: 410 mm			
	U_{RC}			A_{RC}	U_{RC}			A_{RC}
	Acoustik' Light	PCA 16	PCA 32		Acoustik' Light	PCA 16	PCA 32	
850	1.9	1.7	1.5	2.1	1.7	1.6	1.5	2.1
900	1.9	1.7	1.5	2.2	1.7	1.6	1.5	2.2
1000	1.9	1.7	1.5	2.5	1.7	1.6	1.5	2.5
1100	1.9	1.7	1.5	2.8	1.7	1.6	1.5	2.8
1200	1.9	1.7	1.5	3.1	1.7	1.6	1.4	3.1
1300	2	1.7	1.5	3.5	1.7	1.6	1.4	3.5
1400	1.9	1.7	1.5	3.7	1.8	1.6	1.5	3.7
1500	1.9	1.7	1.5	4.1	1.8	1.6	1.5	4.1
1600	1.9	1.7	1.5	4.5	1.8	1.6	1.5	4.5
1700	1.9	1.7	1.5	4.9	1.8	1.6	1.5	4.9
1800	1.9	1.7	1.5	5.3	1.8	1.6	1.5	5.3

* For an 1800 mm unit with a 410 mm high upstand and PCA 32 filling





SKYDÔME

Entre Deux Villes
02270 Sons-Et-Ronchères, France
Tel: +33 (0)3 23 21 79 90
Email: info@skydome.eu
www.skydome.eu

For the product range in other countries, please contact your local representative or visit www.skydome.eu.

SKYDÔME reserves the right to modify product specifications without notice. The information and technical details contained in this documentation are provided in good faith and apply to the uses described. The recommendations for use must be checked to ensure they are appropriate and comply with the actual requirements, the specifications and all applicable legislation and regulations.

For other applications and conditions of use, please contact our technical team. Their advice must be sought concerning uses of our products that are not described specifically herein.

Click this link to check that you are seeing the most up-to-date and accurate information about our products:
https://www.skydome.eu/fr/produit/107_skyclair-multifaces-8-12.html

For **WATERPROOFED ROOFS OR EXISTING UPSTANDS**

SKYCLAIR® MULTIFACES

CE
EN 1873 + A1: 2016



Filling

ORIGIN' RANGE:
• PCA 10



Upstand

- Insulated upstand
- 1.2 mm galvanised steel upstand

ORIGIN' RANGE:

- Height 310 mm with a 15 mm bituminous insulating coating



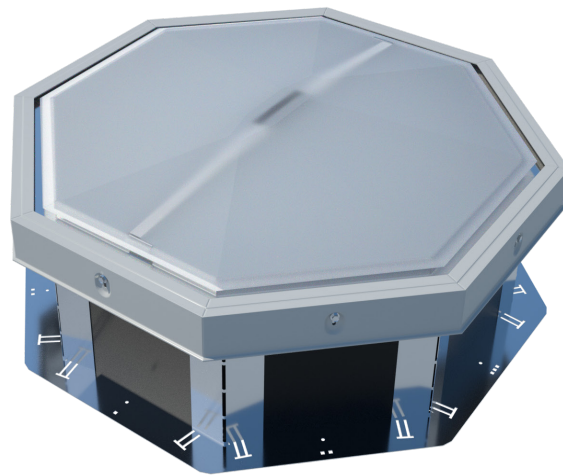
Sides

- 8 or 12 sides depending on product size



VERSION

The SKYCLAIR® MULTIFACES is a skylight intended for waterproofed flat roofs on all types of buildings (including public facilities, work premises and industrial buildings).



Also available:



OPTIONS



Types of filling

- Opal PCA 10 IR
- Grey PCA 10
- Transparent PCA 10



Upstand

- Upstand height: 310 mm, 360 mm, 410 mm or up to 590 mm
- Colaminated or galvanised sheet steel top for PVC waterproofing
- Bare insulation for PVC waterproofing



Other information

- 16 x 16 mm 1200 joule square tube grid
- Upstand lacquered in RAL colour

Available versions



Dimensions & performance

SKYDÔME® MULTIFACES			
Opening dimensions Interior Ø A (mm)	Opening dimensions Exterior Ø B (cm)	Number of sides	Light surface (m ²)
850	1030	8	0.60
900	1080	8	0.67
1000	1180	8	0.83
1100	1280	8	1.00
1200	1380	8	1.19
1300	1480	8	1.40
1400	1580	12	1.58
1500	1680	12	1.81
1600	1780	12	2.06
1700	1880	12	2.32
1800	1980	12	2.60

Filling performance

Other filling and filling options: see "Filling" data sheet.

Type of filling	Thermal transmittance factor Ug (W/ m ² .K)	LT D65 ⁽²⁾	SF or g ⁽²⁾	Reaction to fire	R _w (dB) ⁽³⁾	
	U _{hor} ⁽¹⁾					
Domes	Opal 4-wall PCA 10	2.9	61%	61%	B-s1-d0	R _w =19 dB
	Transparent 4-wall PCA 10	2.9	68%	65%	B-s1-d0	R _w =19 dB
	Opal IR 4-wall PCA 10	2.7	47%	51%	B-s1-d0	R _w =17 dB
	Grey 4-wall PCA 10	2.7	0%	ND	B-s2-d0	ND
Cover	40 mm aluminium cover	0.85	0%	ND	ND	ND

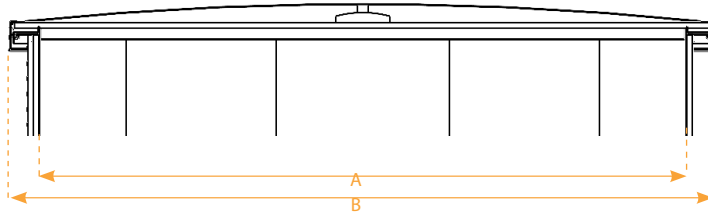
⁽¹⁾Relative to the horizontal, as per §2.31 of the Th-Bat regulations.

⁽²⁾Light transmittance LT D65 and solar transmittance SF (TST or g) as per EN 410.

⁽³⁾Filling insulated against airborne noise R_v, pink noise R_a (environment, airport and industrial activities) and road noise R_{av}, laboratory-measured according to NF EN ISO 140.

Technical diagrams

ORIGIN' range SKYCLAIR MULTIFACES



FOR RENOVATION AND COMPLIANCE WORKS

SKYCLAIR® MULTIFACES is available in an upstandless (SC) version for renovation projects.

COMPLIANCE & INSTALLATION

Compliant with EU standard **NF EN 1873**.

The product must be fastened and sealed in accordance with the requirements defined in the applicable DTU specifications (series 40 and 43).

Maximum insulation height: as per the DTUs, the sealing flashing must extend to a height of at least 150 mm.

The waterproofing complex (substrate, vapour barrier, insulation and two-layer sealant) must be no thicker than 140 mm for an interior upstand height of 310 mm, or 240 mm for an interior upstand height of 410 mm.

Maximum permissible slope: 25° or 46% (see installation instructions).

DoP available at www.skydome.eu



SKYDÔME

Entre Deux Villes
02270 Sons-Et-Ronchères, France
Tel: +33 (0)3 23 21 79 90
Email: info@skydome.eu
www.skydome.eu

For the product range in other countries, please contact your local representative or visit www.skydome.eu.

SKYDÔME reserves the right to modify product specifications without notice. The information and technical details contained in this documentation are provided in good faith and apply to the uses described. The recommendations for use must be checked to ensure they are appropriate and comply with the actual requirements, the specifications and all applicable legislation and regulations.

For other applications and conditions of use, please contact our technical team. Their advice must be sought concerning uses of our products that are not described specifically herein.

Click this link to check that you are seeing the most up-to-date and accurate information about our products:
https://www.skydome.eu/fr/produit/107_skyclair-multifaces-8-12.html